



# technical consortium



*Hosted by the CGIAR*

**technical**  
consortium



**Building Resilience in the  
Horn of Africa**

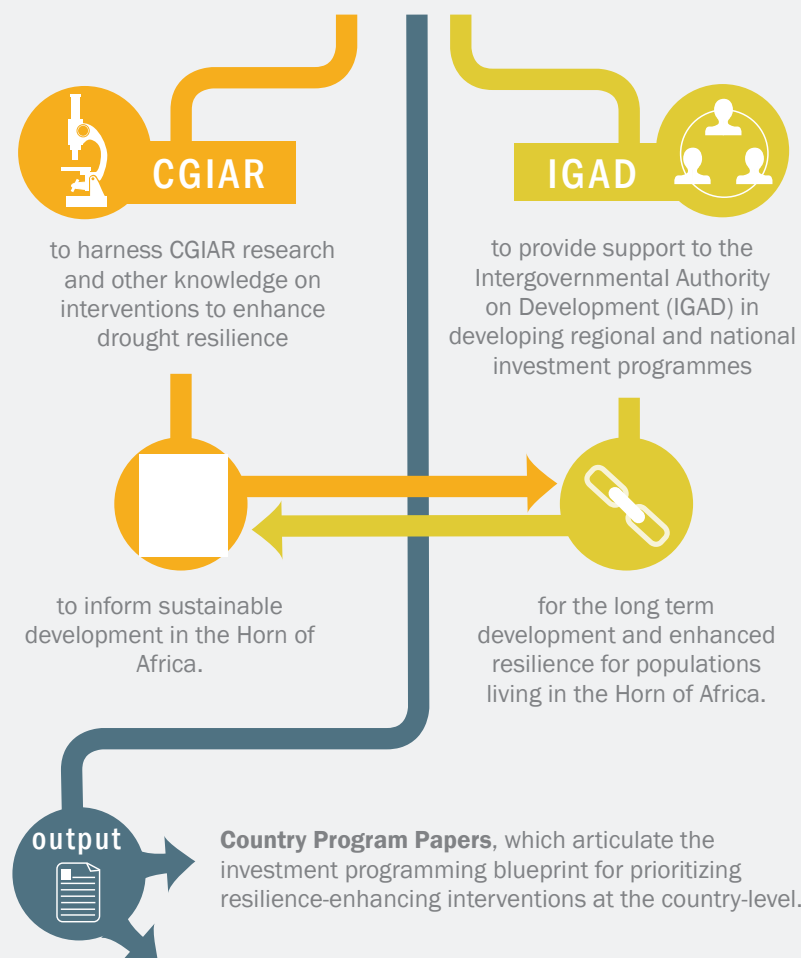




# At a glance

## 2011

The Technical Consortium for Building Resilience in the Horn of Africa was established as a project of the Consultative Group on International Agricultural Research (CGIAR)



**Six technical briefs**, which form the technical rationale and evidence base for identifying interventions, that will ultimately enhance the resilience of the arid and semi-arid lands (ASAL) communities and therefore allow them to better cope with hazards such as drought.

**The long-term focus of the Technical Consortium** is on enhancing resilience in the Horn of Africa and aims to coordinate and provide technical support to IGAD and member states (Djibouti, Ethiopia, Eritrea, Kenya, Somalia, South Sudan, Sudan and Uganda) on evidence-based planning and programming for investments contributing to enhanced resilience of ASAL communities.

# Upcoming plan of work

Since the development of the national drylands investment plans and technical briefs, the Technical Consortium has embarked on more focused engagement with the member states, beginning initially with Kenya and its focal point for drylands investment planning, the National Drought Management Authority, but with a view to extending this engagement to the other member states over the next few years. **Here are details of our projects in action:**

## MONITORING & EVALUATION

The baseline indicator catalogue that the Technical Consortium is developing will provide the foundation for a robust M&E system containing indicators for project-based monitoring and evaluation. In addition to these indicators, the Technical Consortium is focusing on the development of "resilience or impact pathways" to include progress indicators, milestones and intermediate development outcomes to monitor the trajectory of investment towards impact on standard measures of human development and eventually enhanced resilience. These pathways enable measurement at longer temporal scales than is possible at the project level, and will also include outcome mapping to indicate behavioral and transformational change.

## AFRICAN AGRICULTURE TECHNOLOGY PLATFORM

Complementing the analysis and refining of the decisions, M&E tools and metrics in case studies, the Technical Consortium is further closely involved in the development of an African Agriculture Technology Platform (AATP), an initiative being developed by USAID, GIZ, the CGIAR Consortium Office, the International Food Policy Research Institute (IFPRI) and others. The AATP is initially being designed as a facilitated, flexible, scalable and collaborative network aimed at assisting African countries in meeting their Comprehensive Africa Agriculture Development Program (CAADP) National Agricultural Investment Plans (NAIPs) and, in the Horn of Africa, the agricultural investments detailed in the Country Program Papers.

## DECISION ANALYSIS FRAMEWORK

In partnership with the World Agroforestry Centre (ICRAF) and the International Livestock Research Institute (ILRI), the Technical Consortium is collaborating on the development of a framework to enable decision-makers to model the impact of decisions on resilience outcomes.

The framework will provide the opportunity to:

- ensure coherent and transparent investment decision-making, based on the evaluation and assessment of multi-level, local-to-transboundary challenges and mutually agreed upon and articulated outcomes,

- harness development and disaster relief experience and robust scientific evidence, to utilise ex-ante and collectively determined case studies to analyse, test and refine decision-support tools, analytical frameworks and metrics developed by the Technical Consortium and others,
- assess and prioritise decisions to evaluate potential impact for resilience and growth, and
- allow scientists within the CGIAR system to test their innovations with respect to sustainable development impact.

## INVESTMENT TARGETING AND MONITORING TOOLBOX

The Technical Consortium is currently building a program to facilitate technical support in each of the IGAD member states, with a focus on investment project targeting, monitoring and evaluation. These initiatives, called the Investment Targeting and Monitoring Toolbox, are being piloted in Kenya for the National Drought Monitoring Authority as the first stage of potential technical assistance; later stages will extend to all the IGAD member states.

## SPATIAL TOOL

In order to better measure resilience, and to better understand and target interventions that will enhance resilience, the Technical Consortium is developing a pilot spatial tool. The purpose of this resilience-modeling tool is to assist IGAD member states in the Horn of Africa in identifying areas of high and low resilience to known hazards, initially focusing on resilience to drought specifically. This identification of relative levels of resilience geographically will provide an opportunity for better targeting of investment projects proposed in the drylands' investment plans for the respective countries.

The tool overlays multiple data layers indicating linkages and dynamic interactions between key indicators in systems affecting resilience. The result is a mapped output depicting a region's relative resilience, derived from weighted indicators from three key systems: economic, social and ecological. The pilot development of the spatial tool will be trialed with various drought and environmental planning agencies in the IGAD member states to understand its utility in better enabling the targeting of investments and projects for an enhanced impact in building resilience. Ultimately, it will allow governments in the Horn to host a sector-specific investment platform for better targeted planning and resource allocation.

## DATASET REVIEW

The Technical Consortium is working to provide catalogues containing baseline datasets for the IGAD member state countries. Over a six-month period, a data inventory for the region was carried out. This entailed a robust scoping for available datasets, involving extensive consultation with agencies, NGOs and governments in the Horn of Africa to collate available information on data sources.

These datasets will be necessary firstly to establish baselines for the member states to capture the current situation and, secondly, should contain data adequate to measure the impact of investment on enhanced resilience. This item of work is continuing from the previous phase and entails reviewing existing datasets, analysing the gaps in those data and working with other partners to develop novel ways to generate the datasets to make measurement possible.

**technical consortium**

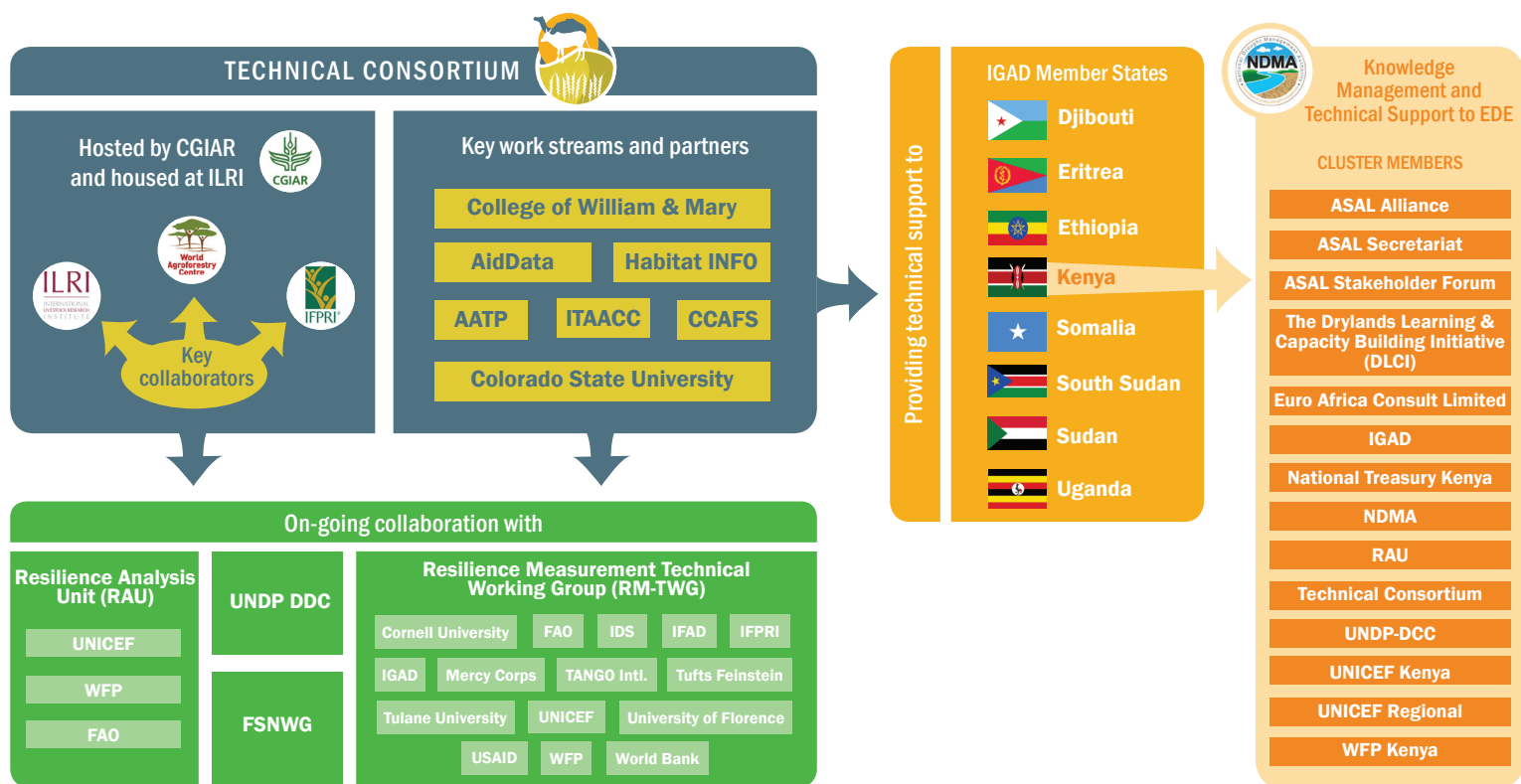


Building Resilience in the Horn of Africa



# Our collaborators

The Technical Consortium is a project of the Consultative Group on International Agricultural Research, housed at the International Livestock Research Institute in Nairobi. The Technical Consortium works with a wide range of technical partners in building resilience in the Horn of Africa. Some of these are listed below:



## Contact us

For any queries, please contact Dr Katie Downie, Coordinator of the Technical Consortium for Building Resilience in the Horn of Africa.

### CONTACT DETAILS

Direct line: +254 20 422 3066  
Mobile: +254 708 985 664  
Email: k.downie@cgiar.org  
Skype: kdowniengini

### HOSTED AT

Mara House  
International Livestock Research Institute (ILRI)  
Old Naivasha Road  
Nairobi, KENYA

[www.technicalconsortium.org](http://www.technicalconsortium.org)

